



catsimulators.com

Cat[®] Simulators

Small Wheel Loader Controls Calibration



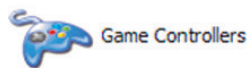
Small Wheel Loader Controls Calibration

Note: If computer or controls change, you will need to recalibrate the simulator.

Initial Steps

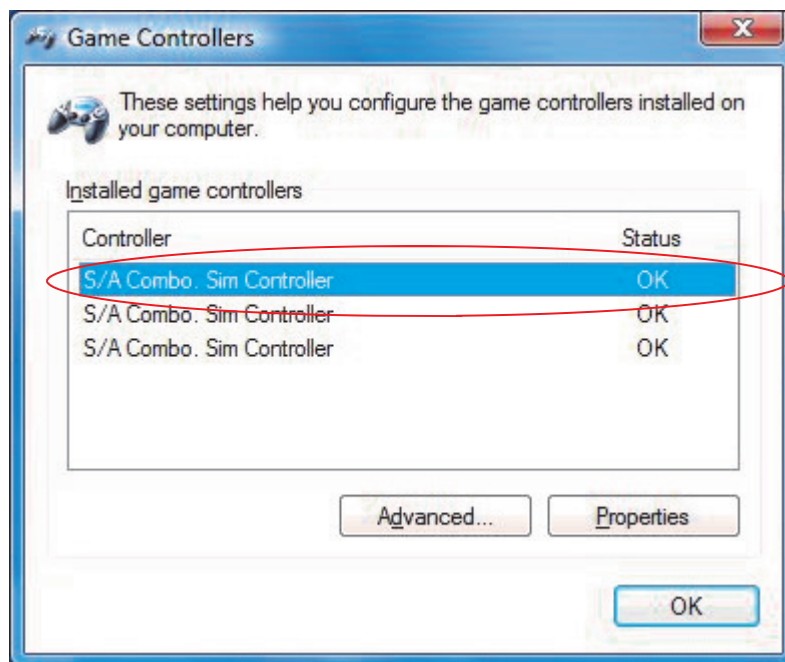
1. Connect all Small Wheel Loader simulator components to your computer as outlined in the “Simulator Assembly Instructions.”
2. For Windows XP or Vista Operating Systems: From your Windows Desktop, Click “Start” — “Control Panel” — “Game Controllers.”

Note: On some computers, this may appear as “Game Options.”

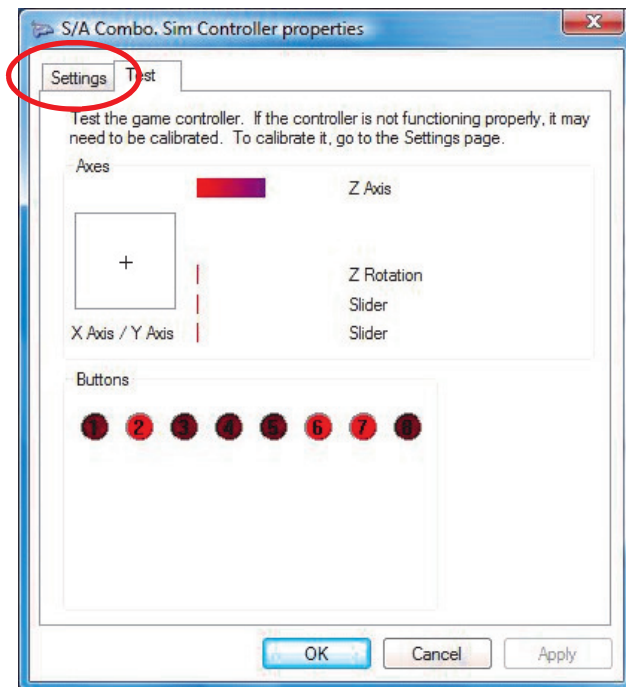


3. Double click the first “S/A Combo. Sim Controller.”

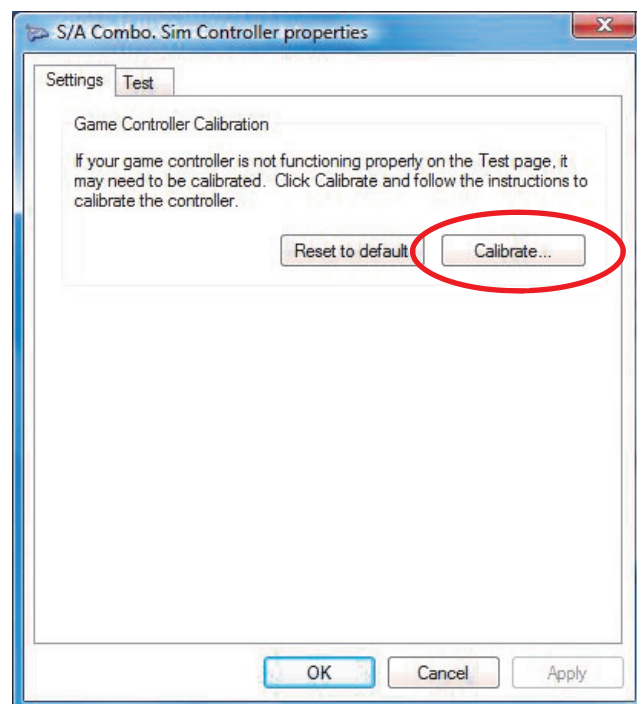
Note: For Windows 7 Operating Systems: From your Windows Desktop, Click “Start” — “Devices & Printers.” Right click on any one of the “S/A Combo. Sim Controllers” listed.



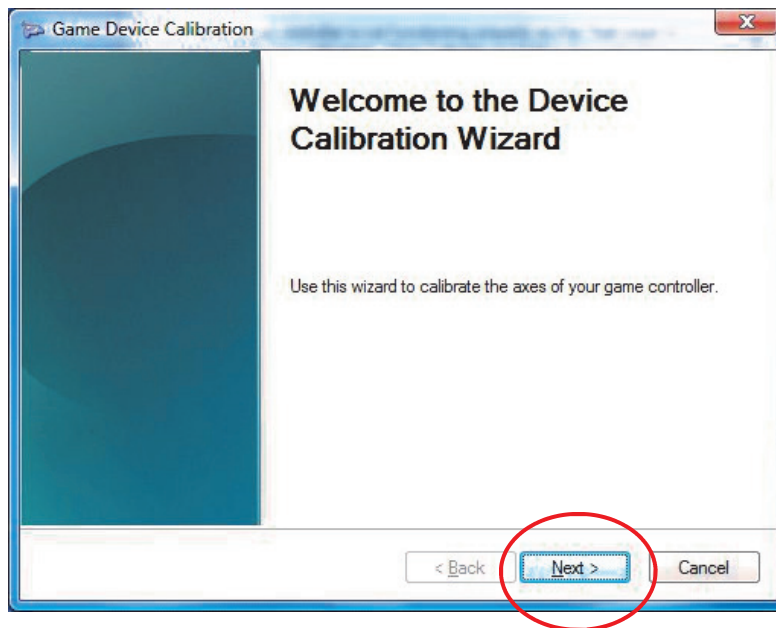
- Click the “Settings” tab.



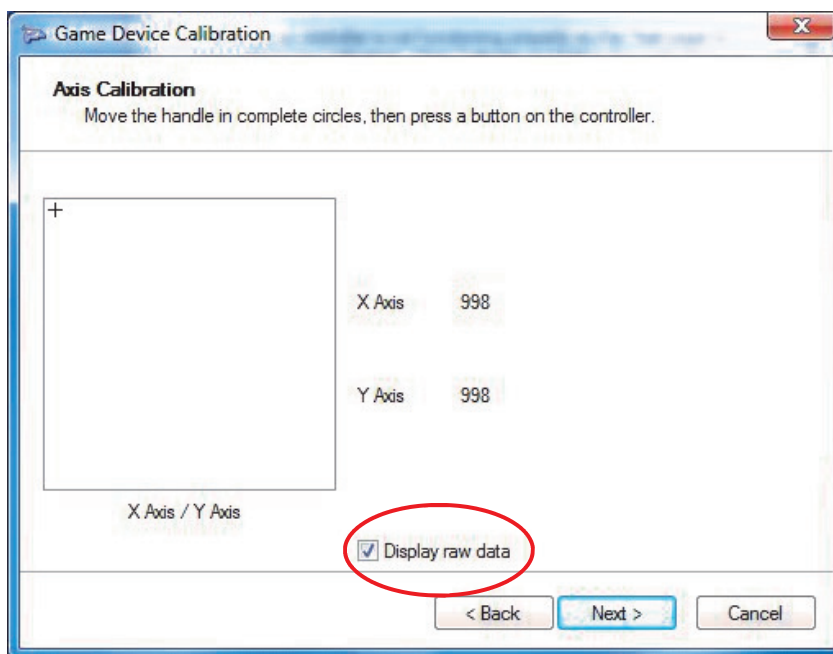
- Click the “Calibrate” button.



6. Click the “Next” button.

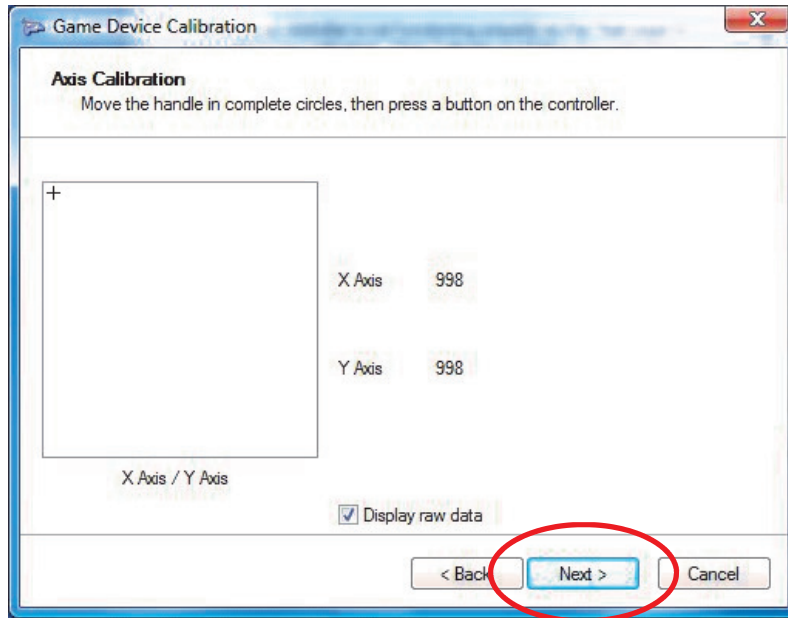


7. Check the “Display Raw Data” box.

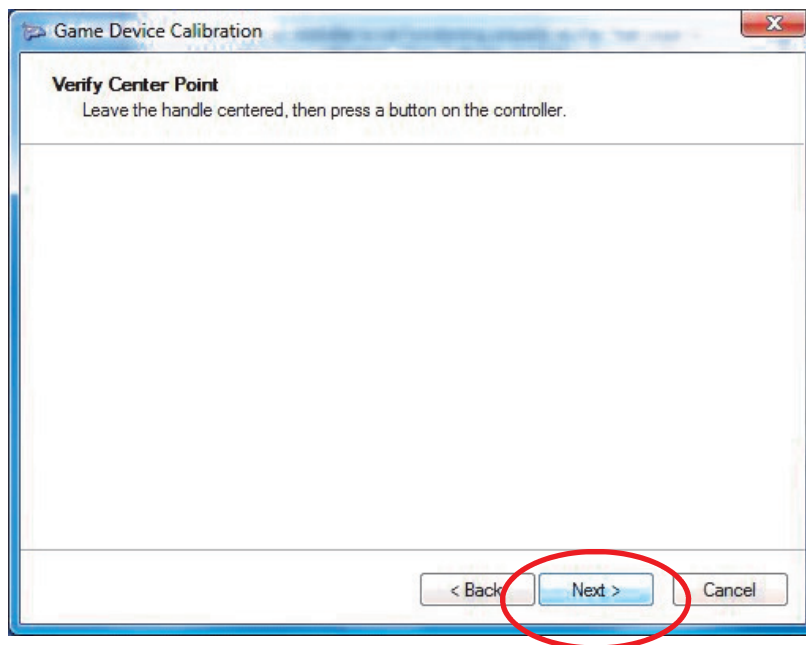


8. Move the joystick control through its full range of motion left to right and forward and backward three times. *Note:* The + indicator may not move.

Click the “Next” button.



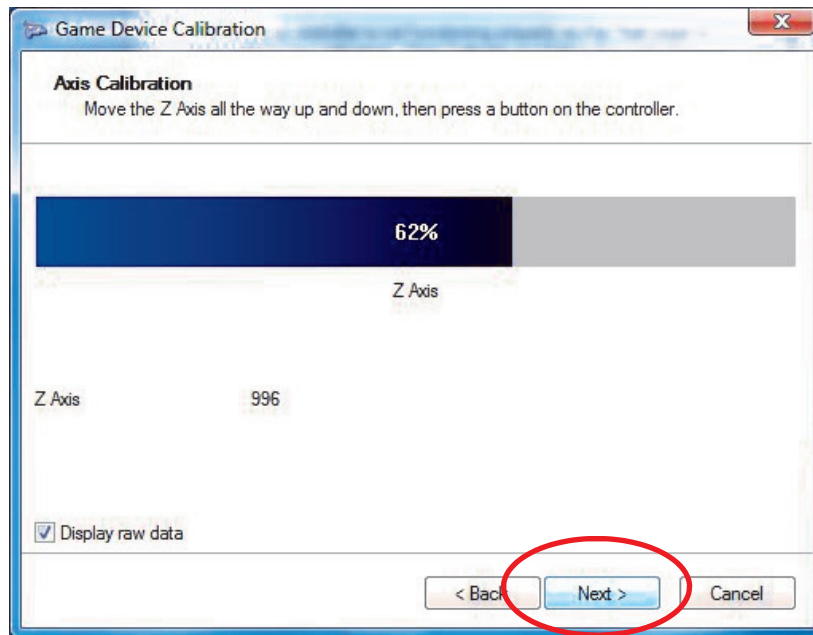
9. Click the “Next” button.



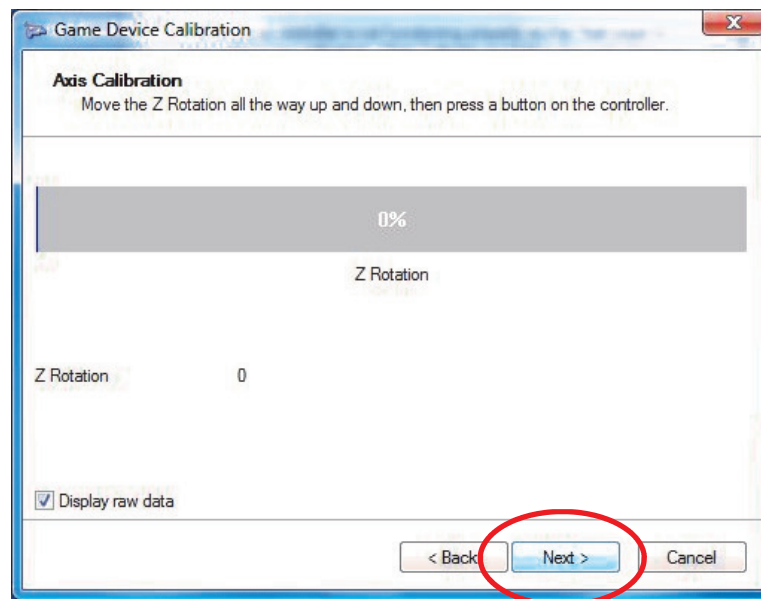
10. Follow the instructions on the screen. Click the “Next” button.

10. Move the MP bucket control forward and back three times through its full range of motion. *Note:* The blue bar in the box may not move.

Click the “Next” button.

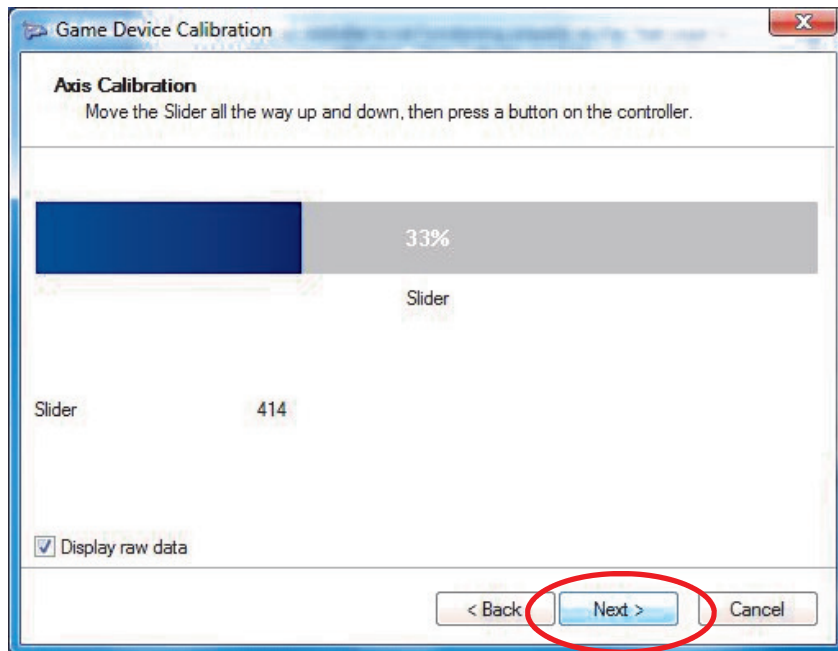


11. Click the “Next” button.

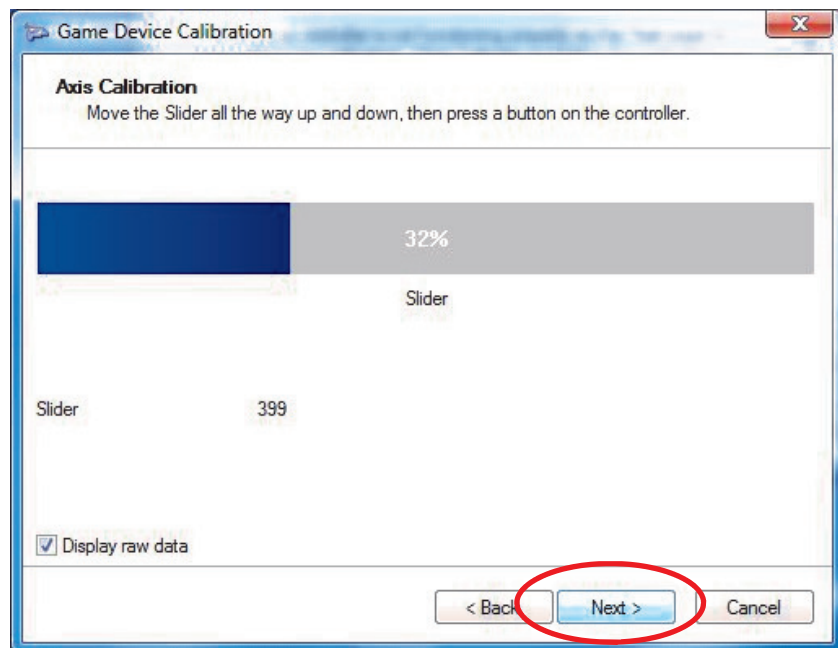


12. Depress and release the center pedal three times through its full range of motion

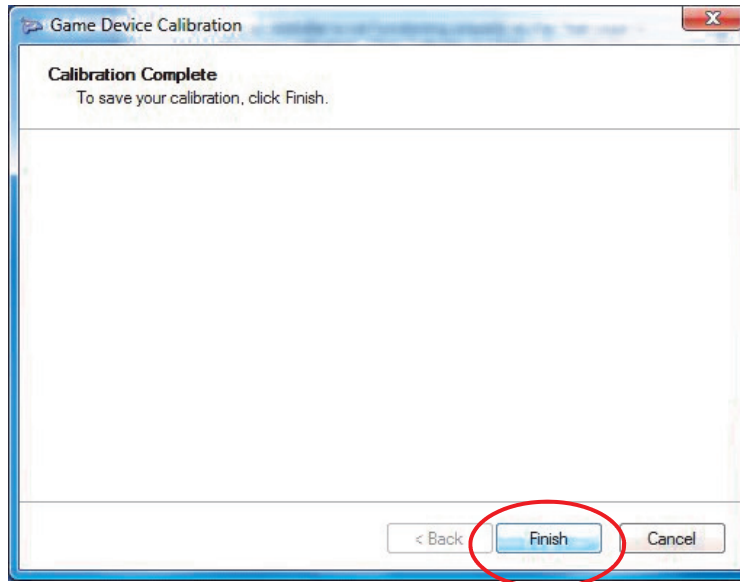
Note: The blue bar in the box may not move. Click the next button.



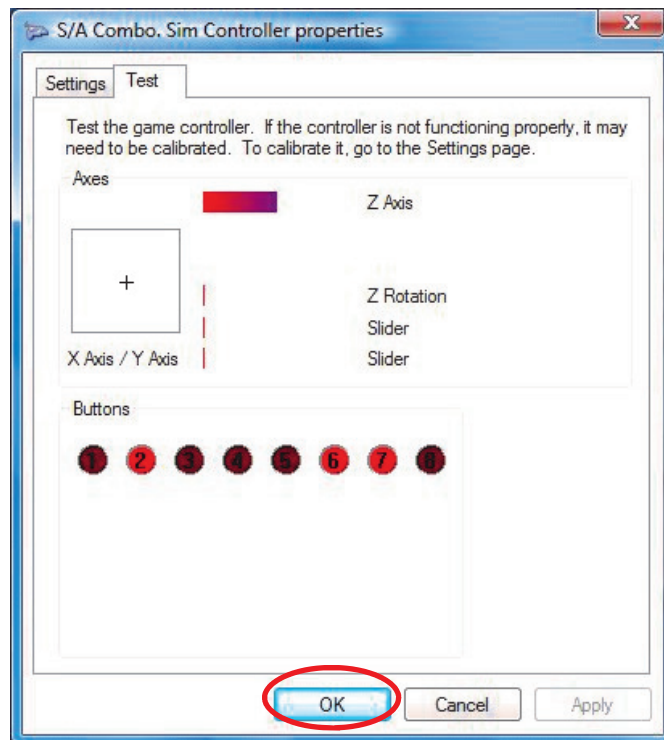
13. Repeat the steps for the right pedal. Click the “Next” button.



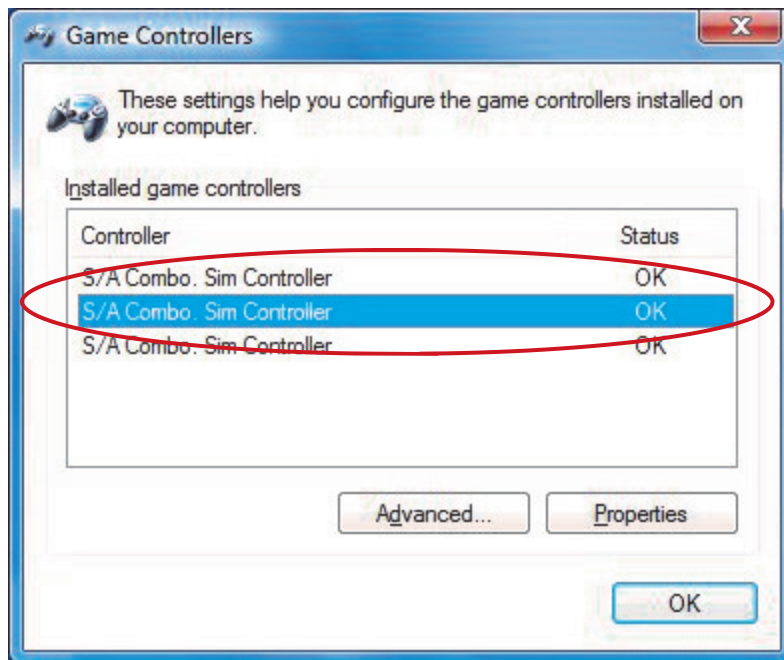
14. Click the “Finish” button.



15. Change the Transmission Direction Control Switch located on the Load Control Joystick to “Forward” and then to “Reverse.” Return the switch to the Neutral (center) position.
Note: Button 2 will light up when “Forward” is selected and Button 3 will light up when “Reverse” is selected.
Click the “Apply” button; click “OK.”

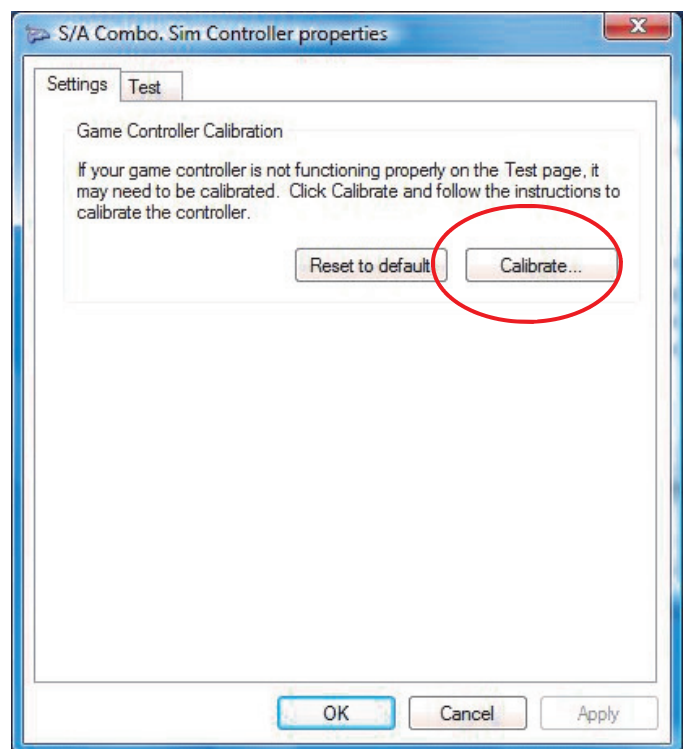
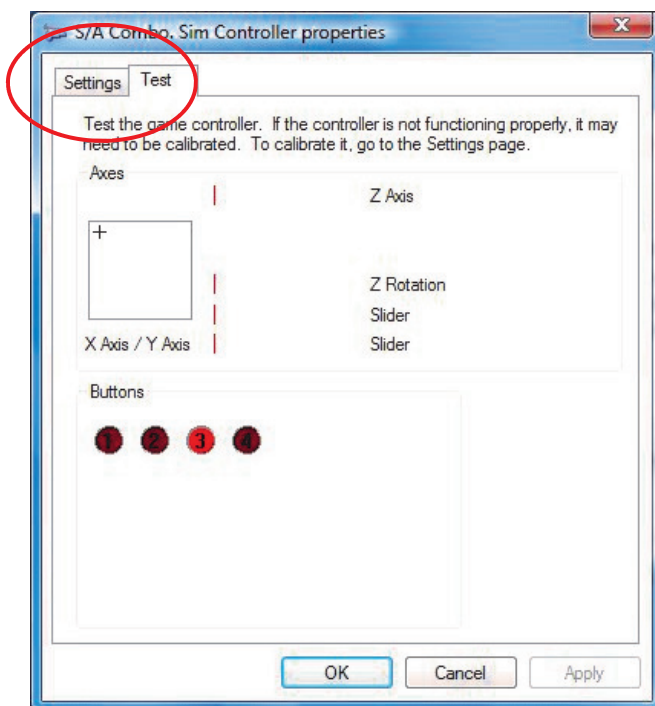


16. Double click the second S/A Combo. Sim Controller as shown.

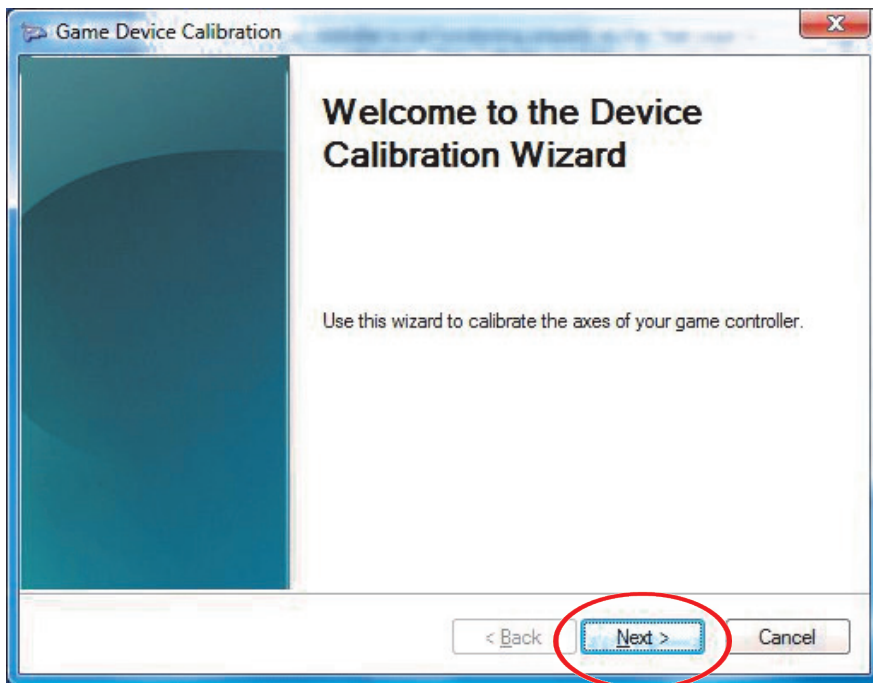


17. Click the “Settings” tab at the upper left corner.

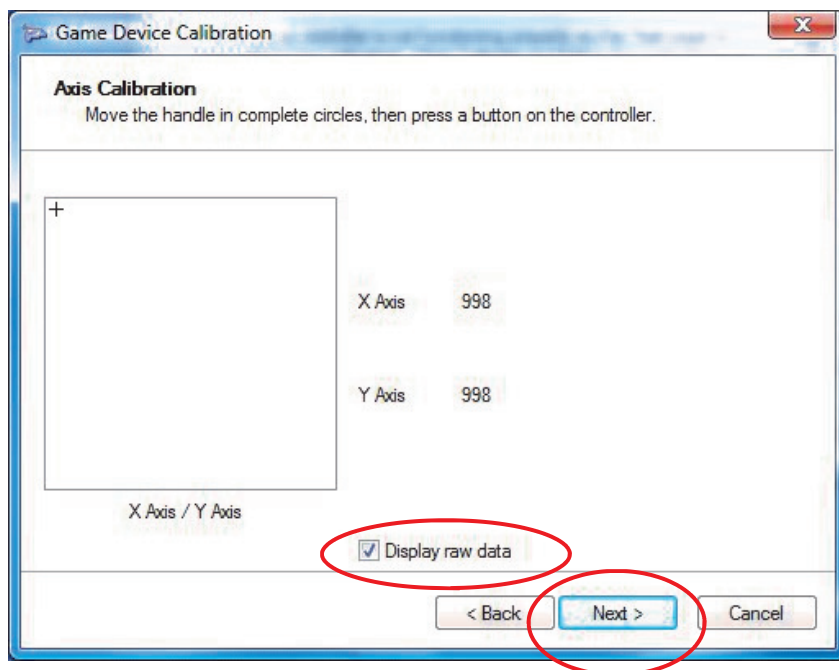
18. Click the “Calibrate” button.



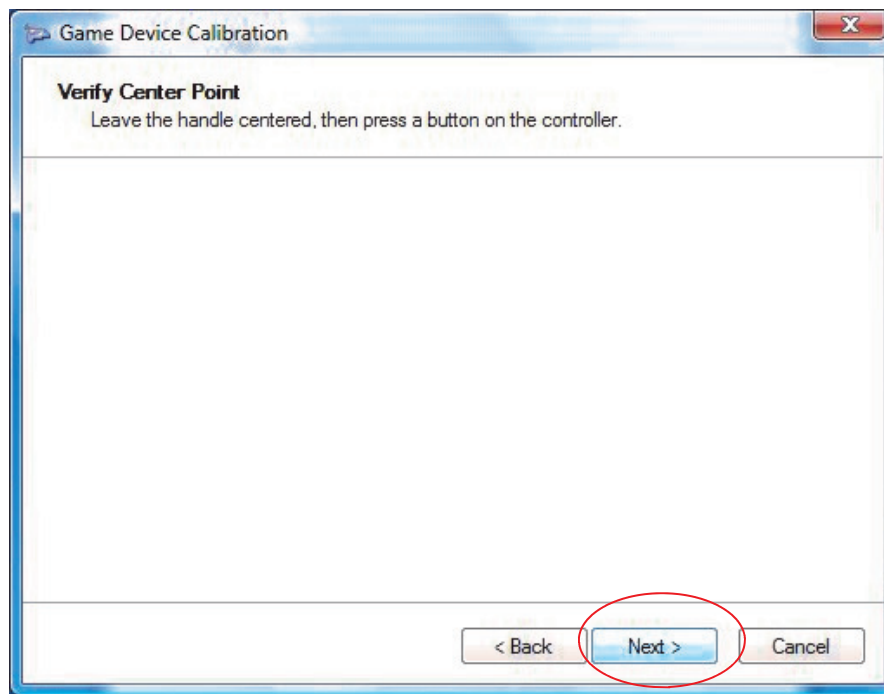
19. Click the “Next” button.



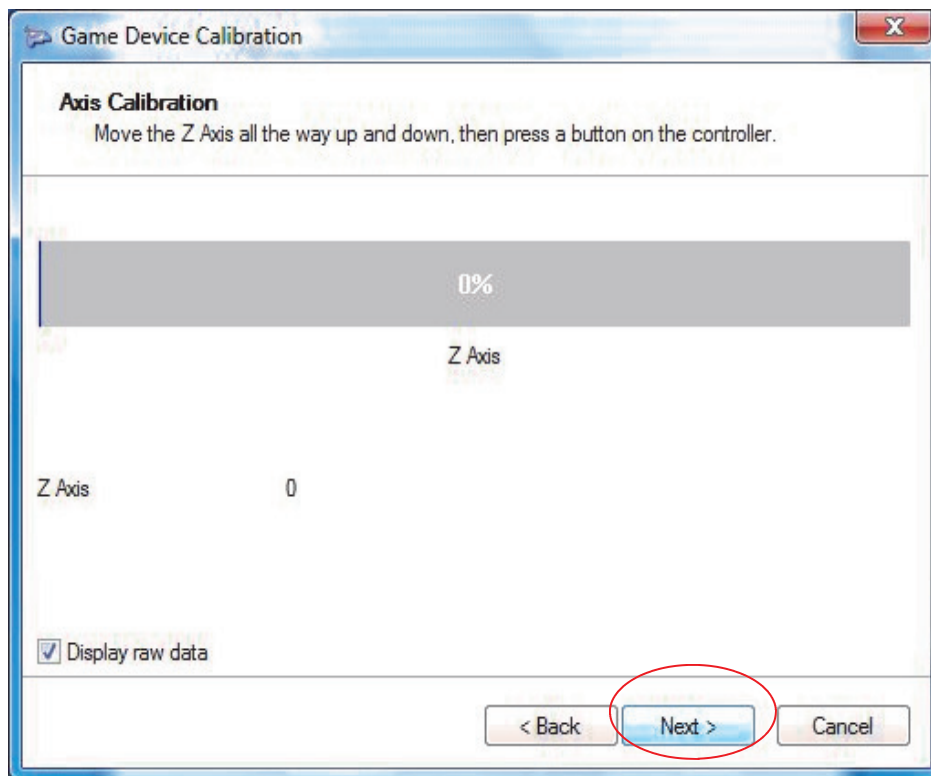
20. Check the “Display Raw Data” box. Move the joystick control through its full range of motion, left to right and forward and backward three times. *Note:* The + indicator may not move. Click the “Next” button. Click the “Next” button again.



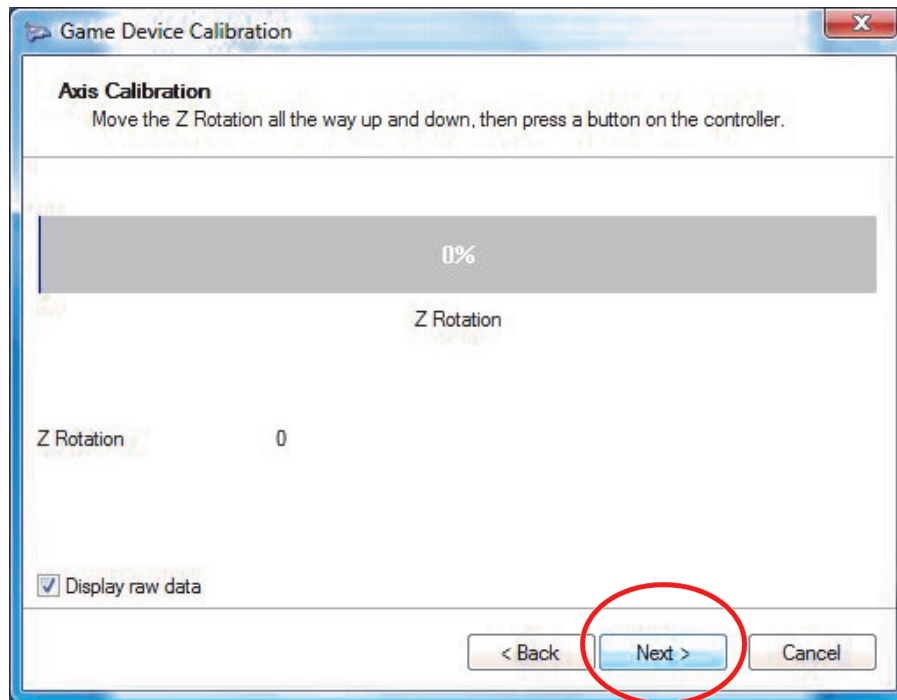
21. Click the “Next” button again.



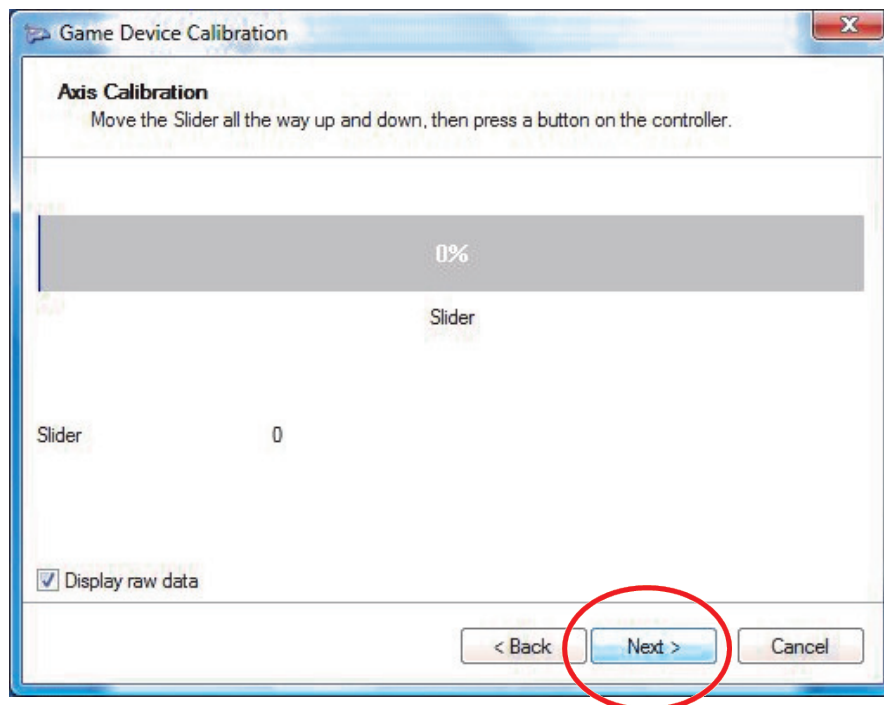
22. Click the “Next” button.



23. Click the “Next” button.



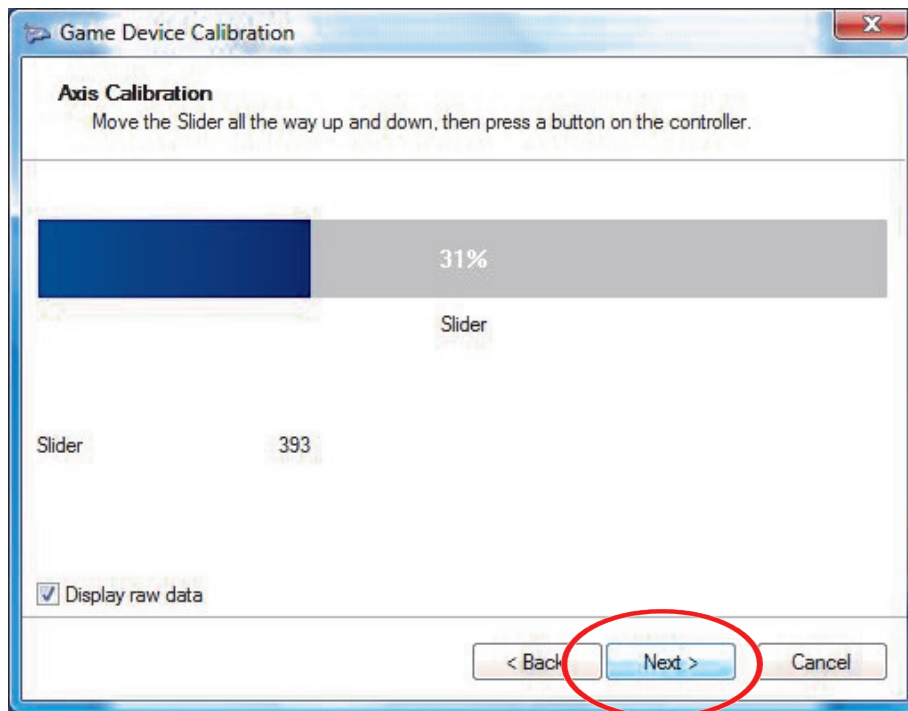
24. Click the “Next” button.



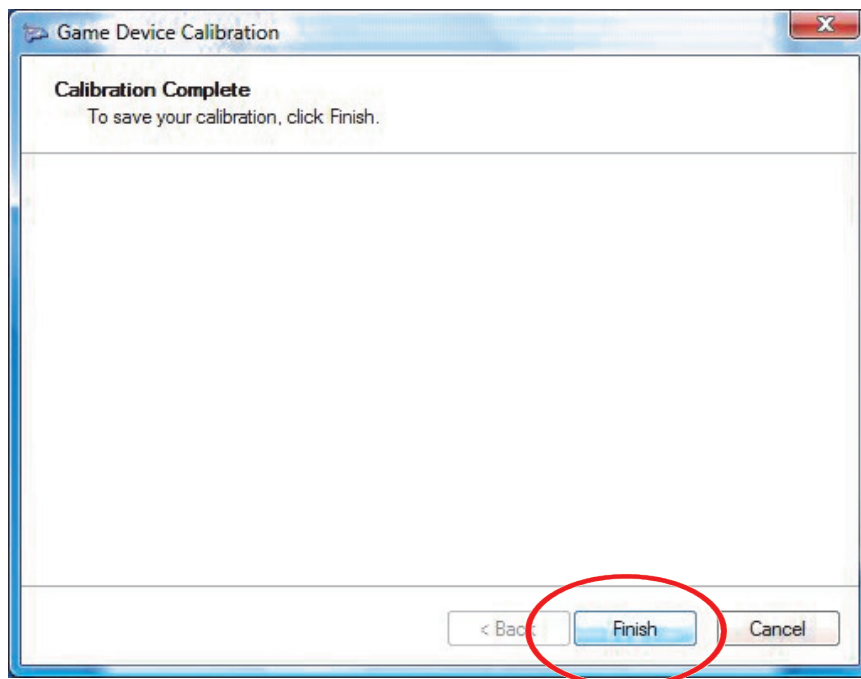
25. Depress and release the left pedal three times through its full range of motion.

Note: The blue bar may not move.

Click the “Next” button.

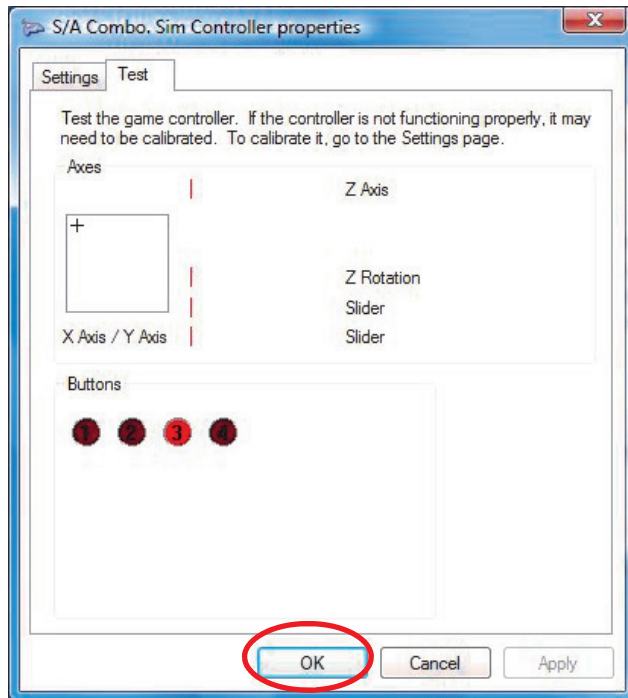


26. Click the “Finish” button.

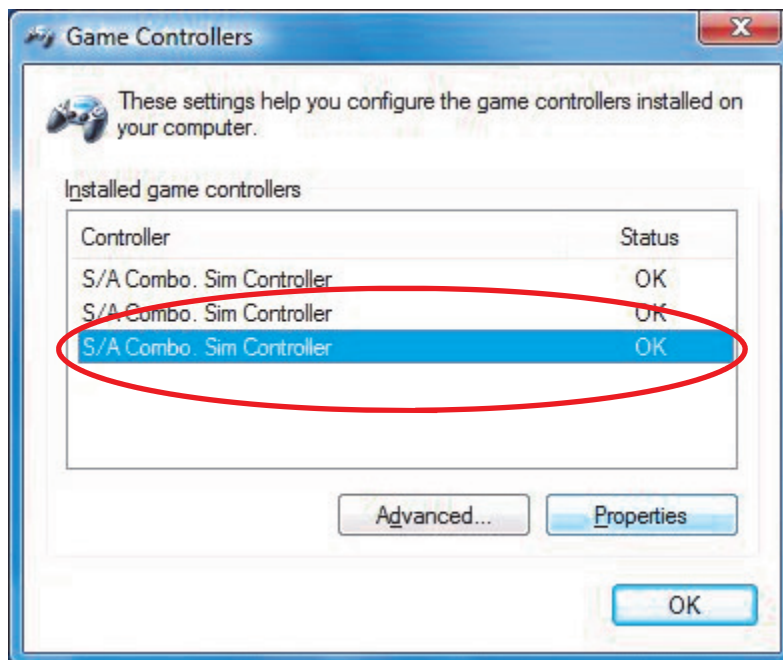


27. Turn the Key Switch to the “Run Position.” Then turn the Key Switch to the “Off” position.
Note: Button 2 will light up when the Key Switch is in the “Off” position.

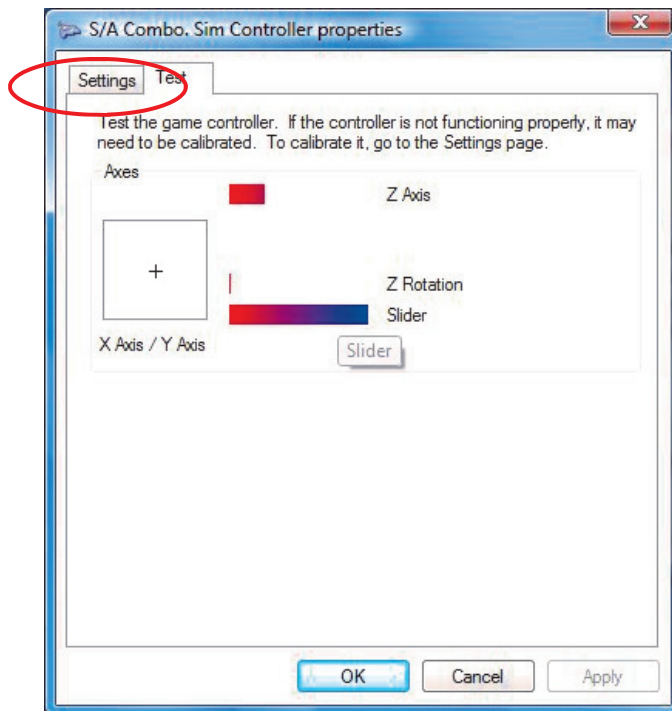
Click the “Apply” button. Click the “OK” button.



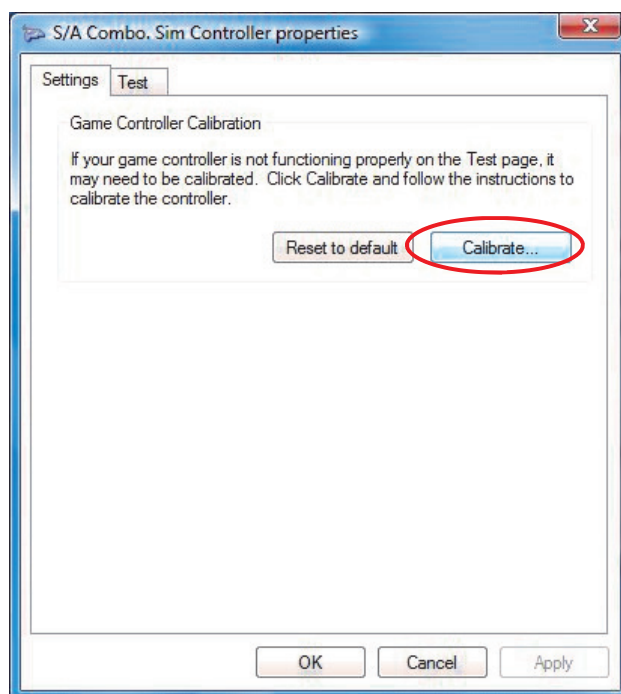
28. Double click the third “S/A Combo. Sim Controller” as shown.



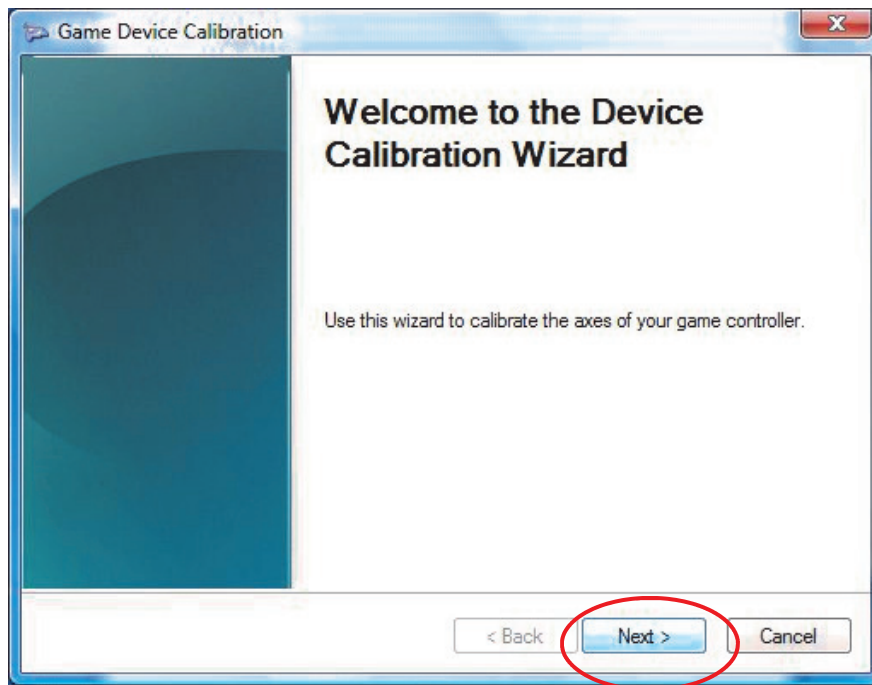
29. Click the “Settings” tab.



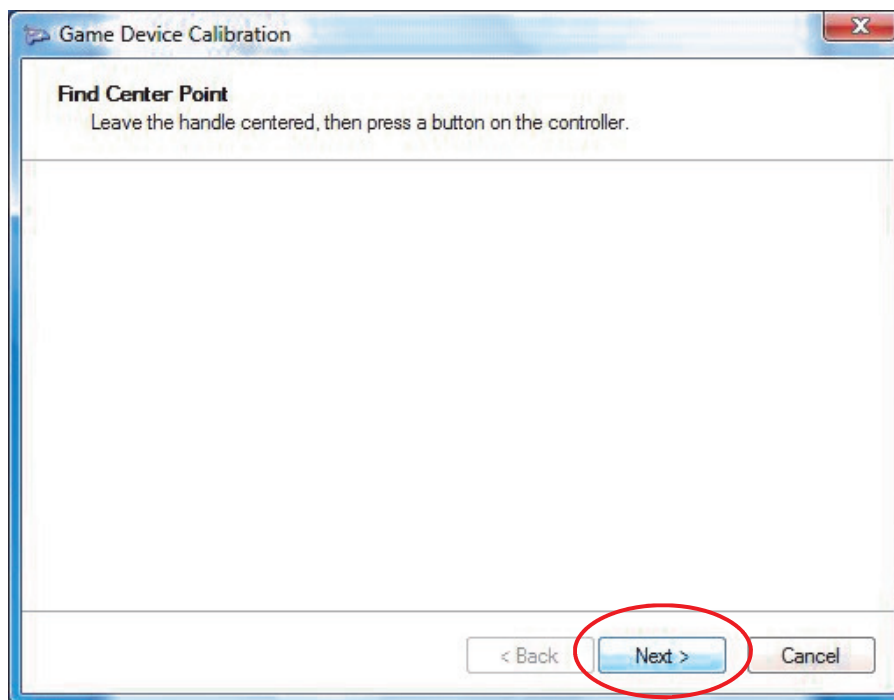
30. Click the “Calibrate” button.



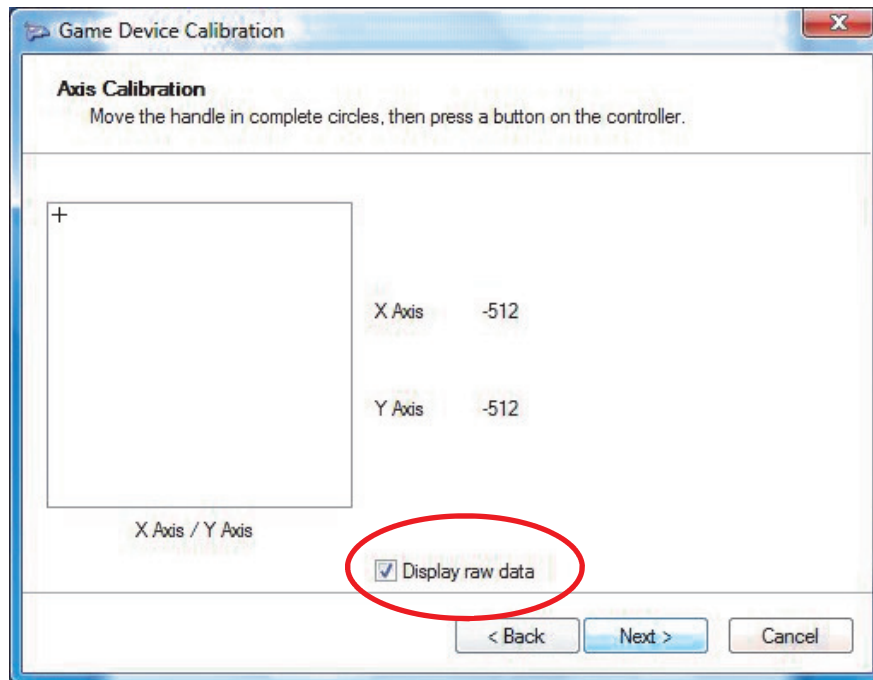
31. Click the “Next” button.



32. Click the “Next” button.



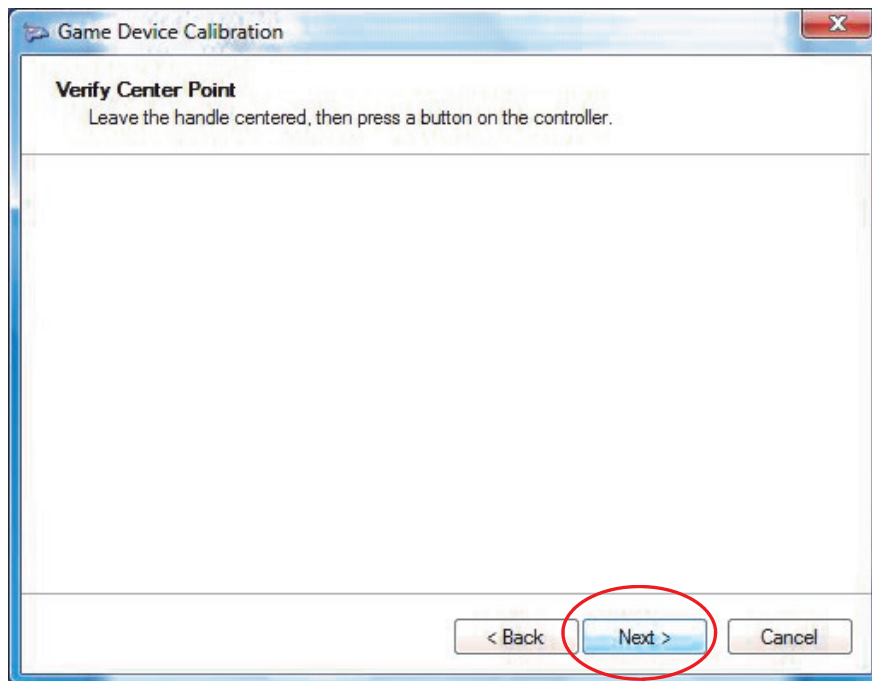
33. Check the “Display raw data” box.



34. Toggle the throttle lock On/Off switch through its full range of motion three times (X Axis Indicator). Push the throttle lock set (top of switch) through its full range of motion three times (Y Axis Indicator).

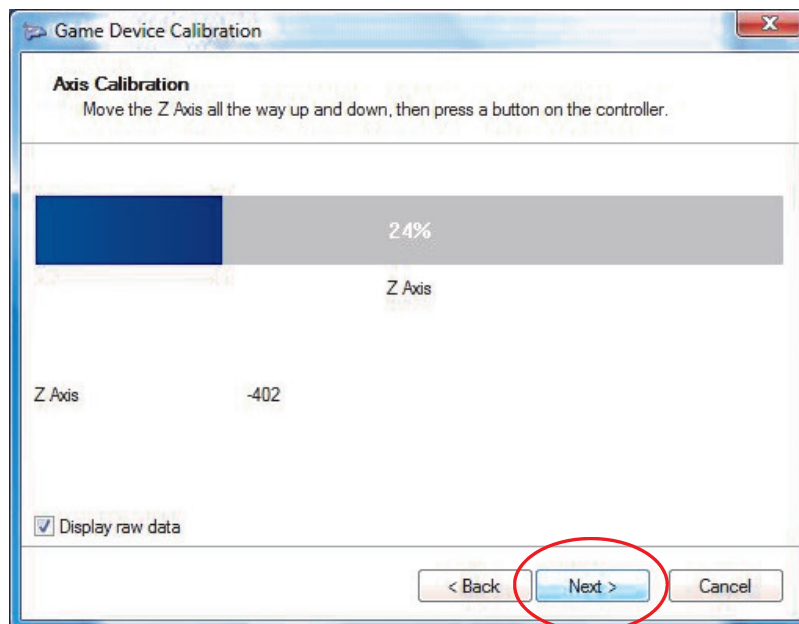
Click the next button.

35. Click the “Next” button.



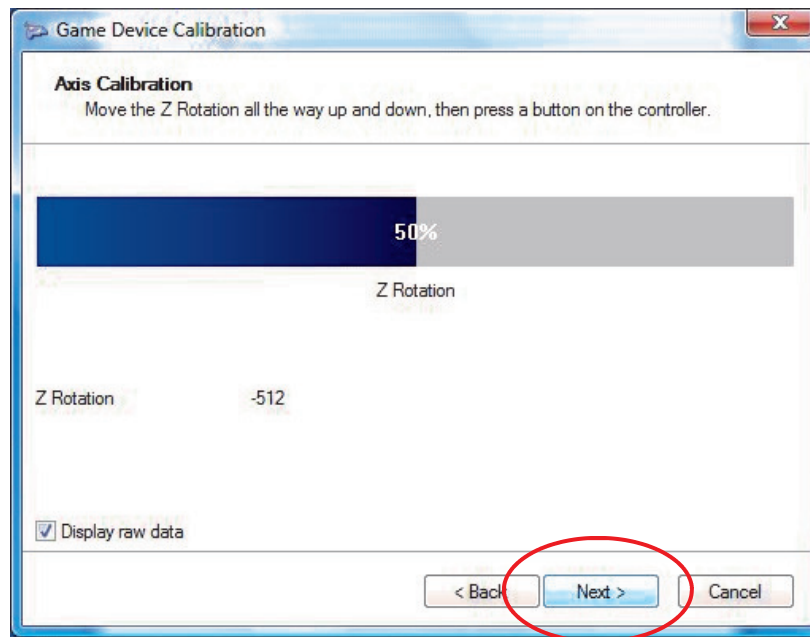
36. Turn the steering wheel all the way left and all the way right three times through its full range of motion. *Note:* The blue bar in the box may not move.

Click the “Next” button.



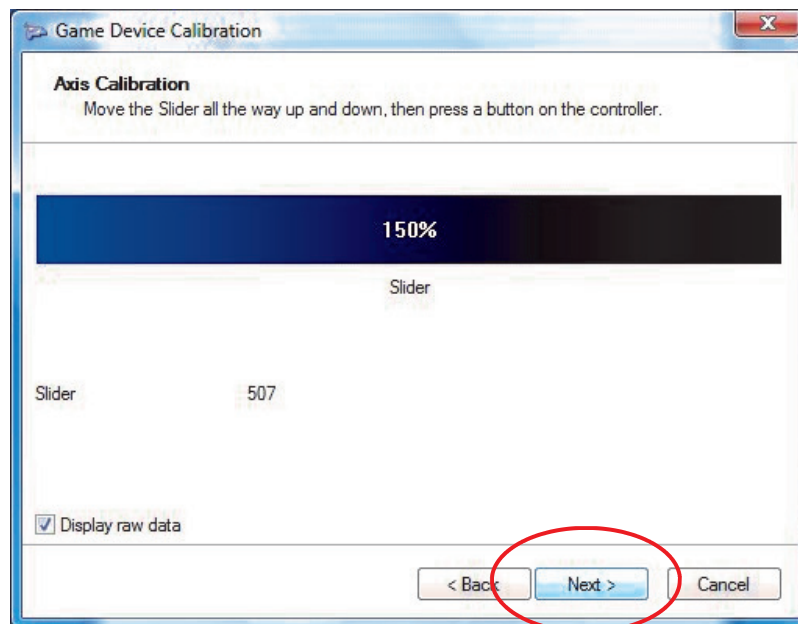
37. Push the throttle lock resume switch (bottom of switch) through its full range of motion three times (Z Rotation Indicator).

Click the “Next” button.

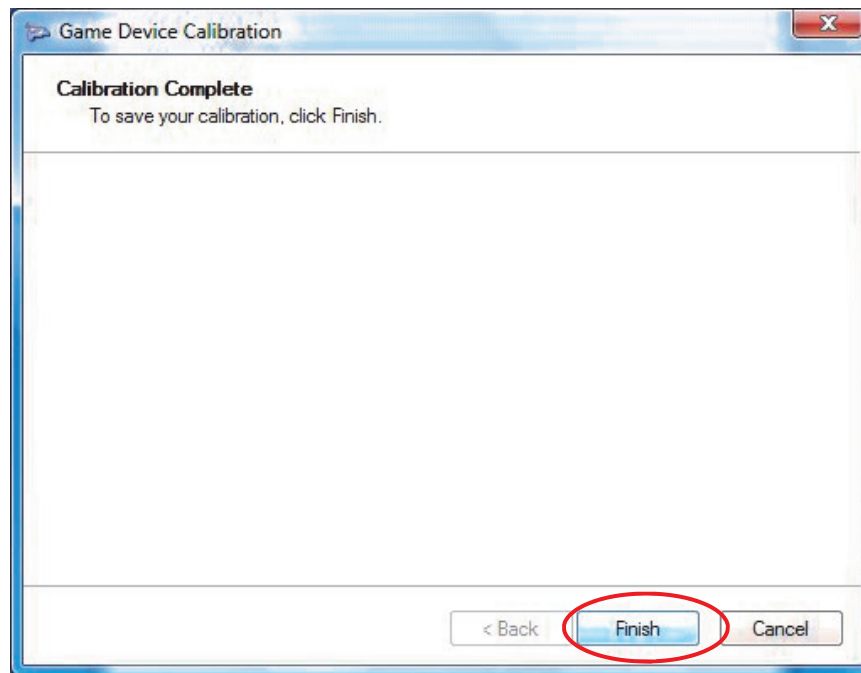


38. Toggle the autoshift control switch through its full range of motion three times. (Slider Indicator)

Click the “Next” button.

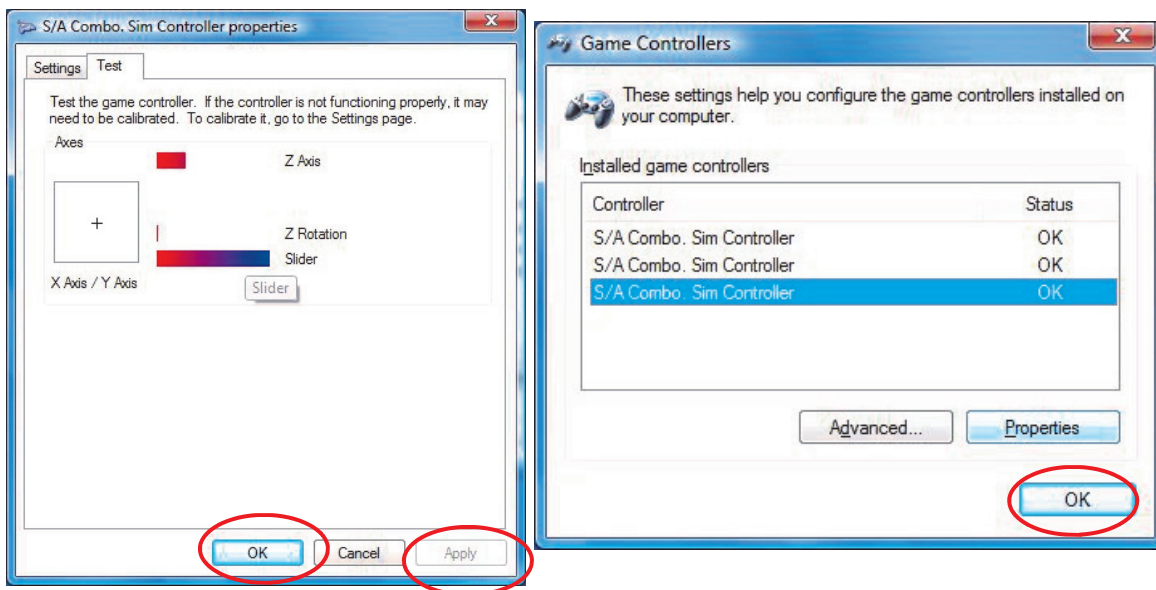


39. Click the “Finish” button.



40. Click the “Apply” button; click the “OK” button.

41. Click the “OK” button on the Game Controllers Screen.



Client Services Support

Cat Simulators come with support services for the first year (nominal subscription fee applied after the first year). Technical support is included (in English) Monday-Friday 6 a.m. to 7 p.m. CST. The support staff will answer any questions, trouble-shooting needs, warranty requests or relicense and transfer needs.

- Call 1.877.434.7467 (inside the U.S.); 1.309.266.2640; or e-mail support@catsimulators.com
- On-site set up and installation of the simulator is available. Call for quote.
- Simulator instruction is available by a trained simulator operator on-site or over the Internet. Call for quote.

The information contained herein is intended for circulation only to Caterpillar and dealer employees whose duties require knowledge of such reports and is intended exclusively for their information and training. It may contain unverified analysis and facts observed by various Caterpillar or dealer employees. However, effort has been made to provide reliable results regarding any information comparing Caterpillar built and competitive machines. Effort has been made to use the latest available spec sheet and other material in the full understanding that these are subject to change without notice. Any reproduction of this release without the foregoing explanation is prohibited.



© 2009 Caterpillar All Rights Reserved. Printed in the U.S.A. CAT, CATERPILLAR, their respective logos, "Caterpillar Yellow" and the "Power Edge" trade dress, as well as corporate and product identity used herein, are trademarks of Caterpillar and may not be used without permission.